



2026 Lafayette Parish Hazard Mitigation Plan Update

Public Information Meeting

Lafayette, LA

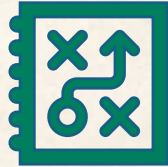
December 11th, 2025



Agenda



**Hazard Mitigation
Overview**



**FEMA HMP
Requirements**




**Community
Rating System
Details**



**Hazard
Identification &
Discussion**



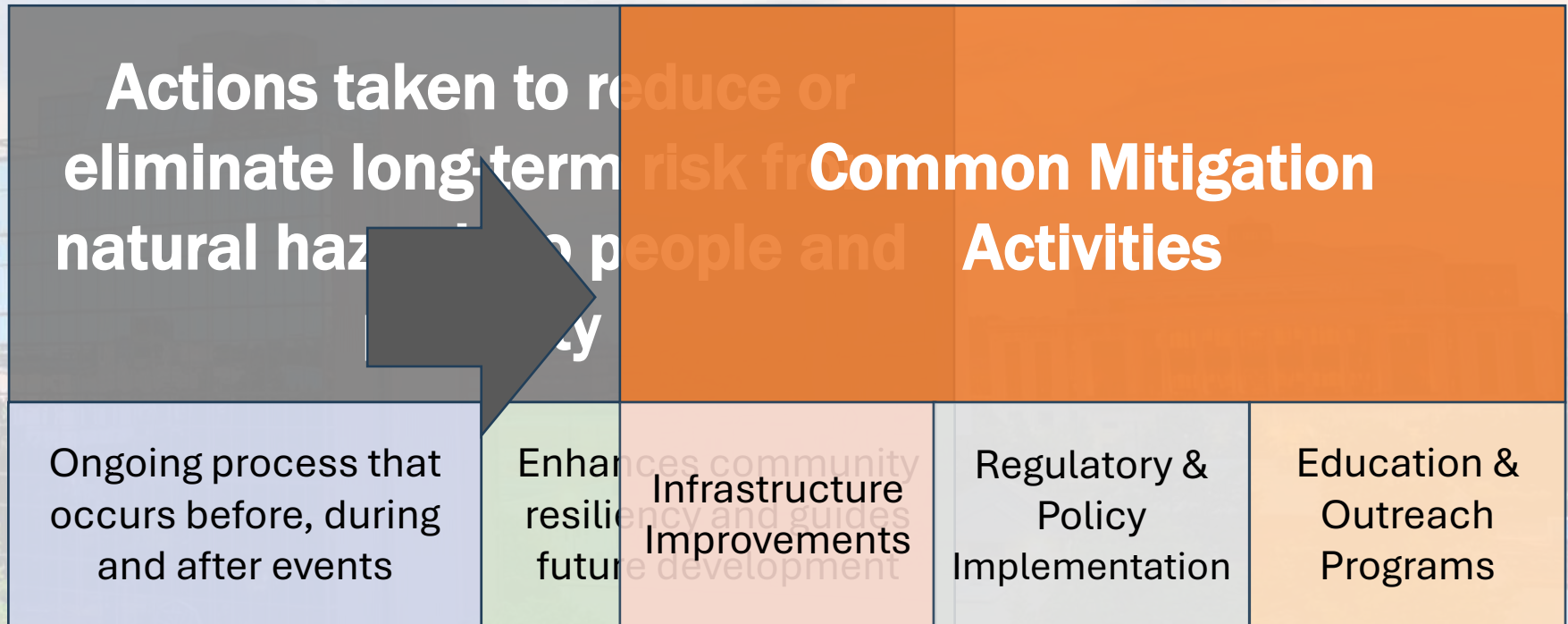
**Public Outreach
Activities**



Phases of Emergency Management



What Is Hazard Mitigation?



Why Have A Hazard Mitigation Plan

Planning efforts help communities become more resilient and sustainable

- Provides platform for input from diverse group of stakeholders
- Identifies most prevalent hazards in the community
- Outlines a strategy to protect community from hazards

Maintains community eligibility for federal post-disaster mitigation funding

- Disaster Mitigation Act (DMA) of 2000 Section 322
- Title 44 Code of Federal Regulations (CFR) §201.6
- **No Plan = No Mitigation Money = No Projects!**

Hazard Mitigation Plan Requirements



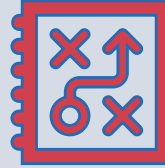
Must include a robust planning committee/ stakeholder group

- Incorporated jurisdictions
- Local/parish agencies
- Local business/ industry
- Members of the public



Must identify and evaluate the risk from natural hazards

- Types/sources of hazards
- Location/extent
- Impacts on community
- Previous occurrences
- Potential for future events



Must outline strategy for reducing impacts for identified risks

- Set clear goals/ objectives
- Identify actions or projects
- Establish timelines, responsible parties & funding sources



Must be formally adopted by all participating jurisdictions

- All HM plans in LA are multi-jurisdictional
- Administered at parish level
- Incorporated communities within parish must also adopt



Must be updated and receive FEMA approval every five years

- Reassess risks, vulnerabilities & mitigation strategy
- Must reflect changes in conditions & development

Community Rating System (CRS)



The CRS program is a voluntary, incentive-based program that encourages communities to participate in enhanced floodplain management practices



Participating communities can receive flood insurance premium discounts for all NFIP policies, including those outside of the Special Flood Hazard Area (SFHA)



- Lafayette C&P – Class 7
 - 15% Discount
- Carencro – Class 7
 - 15% Discount
- Scott – Class 7
 - 15% Discount
- Youngsville – Class 8*
 - 10% Discount

*Youngsville's Class 8 rating is set to go into effect April 1, 2026.

Hazard Identification

Previously Profiled Hazards

- Drought
- Excessive Heat
- Flooding
- Sinkholes
- Thunderstorms
- Tornadoes
- Tropical Cyclones
- Wildfires
- Winter Weather

FEMA'S National Risk Index

- Heat Waves
- Hurricanes
- Ice Storms
- Lightning
- Riverine Flooding

Hazards Discussion

Hazards For Consideration*	
Flooding	99.8 (Very High)
Tropical Cyclones	97.7 (Relatively High)
Ice Storms	85.9 (Relatively High)
Heat Wave	83.3 (Relatively Moderate)
Drought**	82.0 (Relatively Low)
Lightning	72.0 (Relatively Moderate)
Tornadoes	69.7 (Relatively Low)
Wildfires	66.4 (Relatively Low)
Winter Weather	19.2 (Very Low)
Sinkholes	Not profiled by the NRI

*Risk Index scores are calculated as: Expected Annual Loss x (Social Vulnerability/Community Resilience). Visit hazards.fema.gov/nri for additional information on the National Risk Index
**Risk score for drought is based on Agriculture only

What hazards are most concerning?

Any other hazards for consideration?

Problem areas in your community?

Ideas for mitigation activities?

Public Response Activity

- Captures feedback from meeting participants
- Encourages sharing of site-specific concerns and overlooked hazards
- Provides space for community-driven ideas on mitigation priorities

2026 Lafayette Parish Multi-Jurisdictional Hazard Mitigation Plan Update

Lafayette Parish Public Information Meeting
Public Response Activity
December 11th, 2025

Thank you for attending the Lafayette Parish Public Information Meeting! Your participation and input is vital to the success of the **2026 Lafayette Parish Hazard Mitigation Plan**. Please take a few minutes to answer the questions below and return this form at our next meeting or to the Lafayette Parish Office of Homeland Security and Emergency Preparedness.

Name: _____
City of Residence: _____
Email Address: _____

Question #1: As a resident of Lafayette Parish, which natural hazards concern you the most? Have any recent events changed your perception or increased your concerns about these hazards?

Question #2: Of the hazards discussed today, do you feel any significant hazards impacting Lafayette Parish were left out and should be included in this plan update? If so, why?

Question #3: Are there places in your community that you believe are at higher risk from natural hazards than other areas? If so, which areas of the parish and which hazards?

Question #4: Thinking about the hazards we discussed today, what mitigation activities do you believe Lafayette Parish should focus on to reduce their impacts? Are there any mitigation efforts that should be prioritized? Please explain.

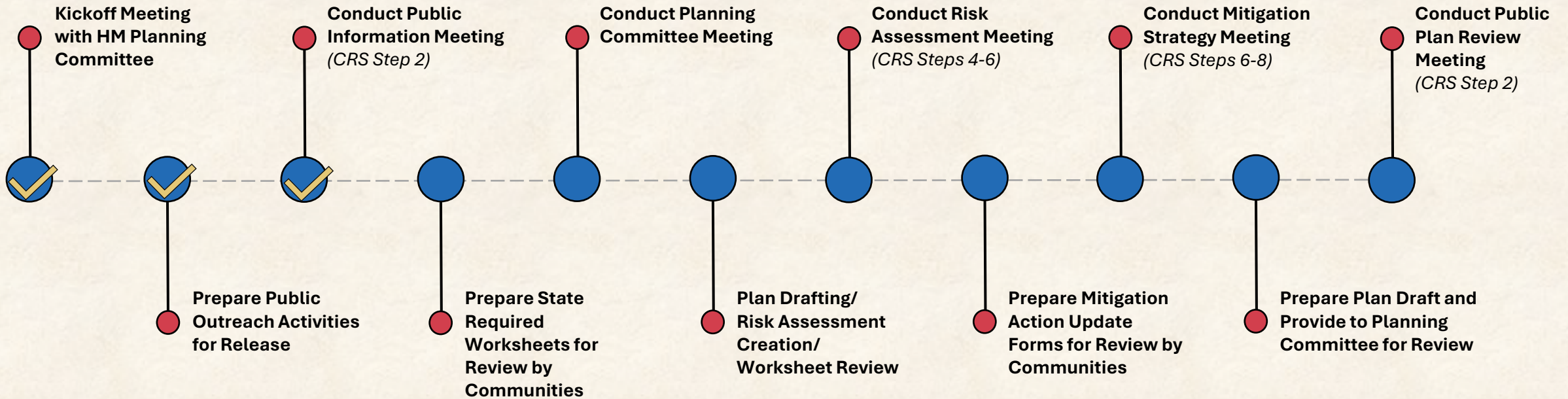
If you have any additional feedback about natural hazards in Lafayette Parish or the hazard mitigation plan update process, please share it in the space below:

Parish Mitigation Survey

- Collects information regarding perceptions of local hazards and mitigation efforts
- Results will be included in the plan if there are enough responses
 - <https://tinyurl.com/LCGHMP2026>



Plan Update Process Timeline



SDMI Hazard Mitigation Website

- Repository for materials used during the plan update process
- <https://hmplans.sdmi.lsu.edu/>

The screenshot shows the home page of the SDMI Hazard Mitigation website. At the top, there is a navigation bar with the LSU Stephenson Disaster Management Institute logo and the text "SDMI HOME". Below this is a "HAZARD MITIGATION" header with sub-navigation for "Intro", "Events", "FEMA Resources", and "Parish Plans". The main content area features a "Sponsored by" section with the Louisiana State Seal and a section titled "Why We Have Hazard Mitigation Plans" explaining the federal requirements. Below this are three tabs: "CHOOSE A VIEW", "MAP OF PARISHES", and "LIST OF PARISHES". The "MAP OF PARISHES" tab is active, showing a map of Louisiana with parishes color-coded by their development status. A "Development Process" legend at the bottom indicates four stages: Plan Development (light blue), Plan Review (medium blue), Plan Adopted (dark blue), and Completed (darkest blue). A summary table at the bottom shows the number of parishes currently in each stage.

Step 1: Plan Development	Step 2: Plan Review	Step 3: Plan Adoption	Step 4: Completed
4 Parishes currently in this stage	10 Parishes currently in this stage	1 Parishes currently in this stage	45 Parishes currently in this stage

The screenshot shows the details page for Lafayette Parish on the SDMI Hazard Mitigation website. The page title is "Lafayette Parish" and it includes a "PLAN DUE DATE: JULY 28 2026". A "DEVELOPMENT STATUS" progress bar shows the stages: PLAN DEVELOPMENT (orange), PLAN REVIEW (purple), PLAN ADOPTION (purple), and COMPLETED (purple). Below the progress bar, a timeline shows key events: "KICKOFF MEETING OCT 2025" (TBD), "TBD", "TBD", and "TBD". A section titled "PARTICIPATING JURISDICTIONS" lists the City of Broussard, City of Carencro, Town of Duson, Lafayette City-Parish Consolidated Government, City of Scott, and City of Youngsville. A calendar event for "OCT 23 LAFAYETTE PARISH KICKOFF/EXECUTIVE OVERVIEW MEETING" is shown with details: Lafayette, LA, 09:00 AM - 10:30 AM 10/23/2025. A "PREVIOUS PLANS" section lists documents from 2021 and 2016, each with a "DOWNLOAD" button.

Call To Action

- Hazard mitigation reduces disaster risks and saves money in the long-term
- Mitigation plans are essential components for community safety and future funding opportunities
- Active support and participation in the planning process is critical
- **Prioritizing and investing in mitigation activities today results in a safer and more resilient tomorrow!**



Questions?



Contact Us

Chris Rippetoe, CFM

HM Program Manager

crippe2@lsu.edu

(225) 578-6667

Jason Martin

Emergency Management Analyst

jmar293@lsu.edu

(225) 578-6264