



2026 Lafayette Parish Hazard Mitigation Plan Update

Kickoff Meeting

October 23, 2025

Introductions

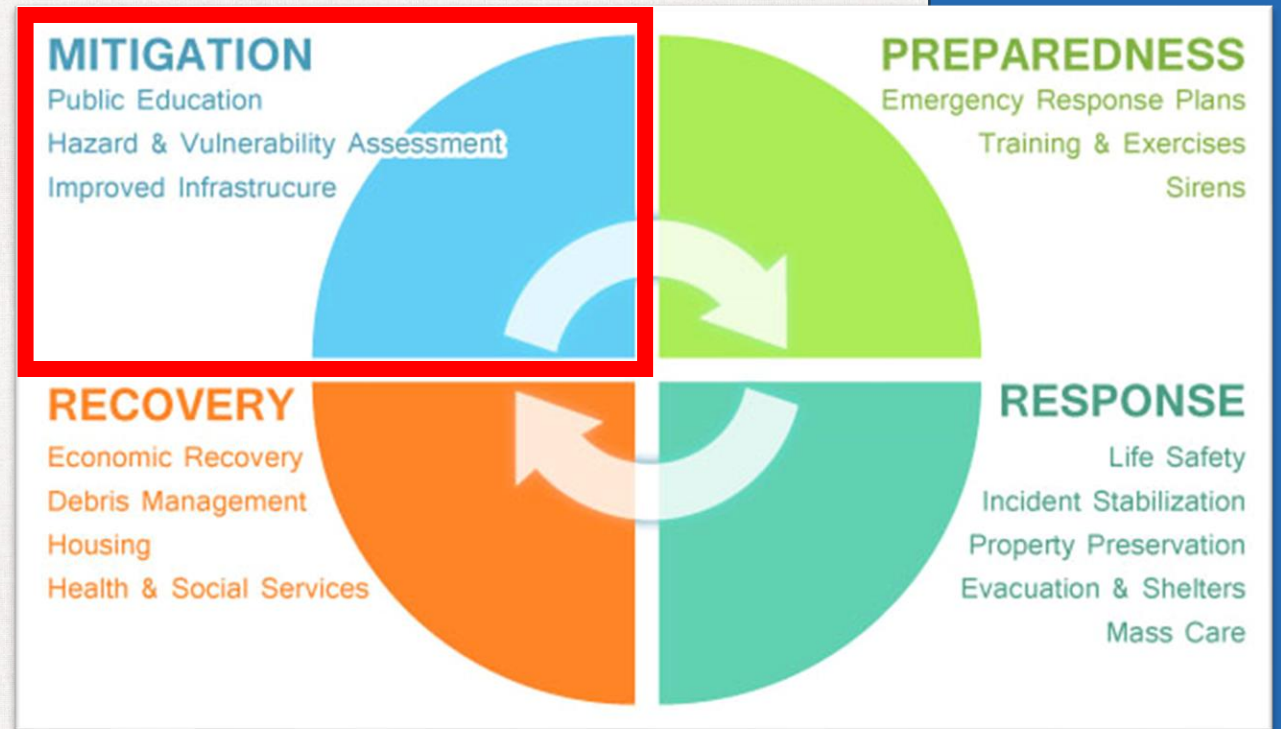
- **Stephenson Disaster Management Institute (SDMI)**
 - Chris Rippetoe – Hazard Mitigation Program Manager
 - Jason Martin – Emergency Management Analyst
- **Lafayette Consolidated Government**
 - Chad Sonnier – Lafayette Parish OHSEP
 - Christina Dayries – Lafayette Office of Mayor-President
 - Jessica Cornay – Lafayette Consolidated Government
 - Clay Boudreaux – Lafayette Consolidated Government
- **Governor's Office of Homeland Security and Emergency Preparedness (GOHSEP)**
 - Lennie LaFleur– Preparedness Program Specialist
 - Marion Pearson – Hazard Mitigation Planner

Who is SDMI?

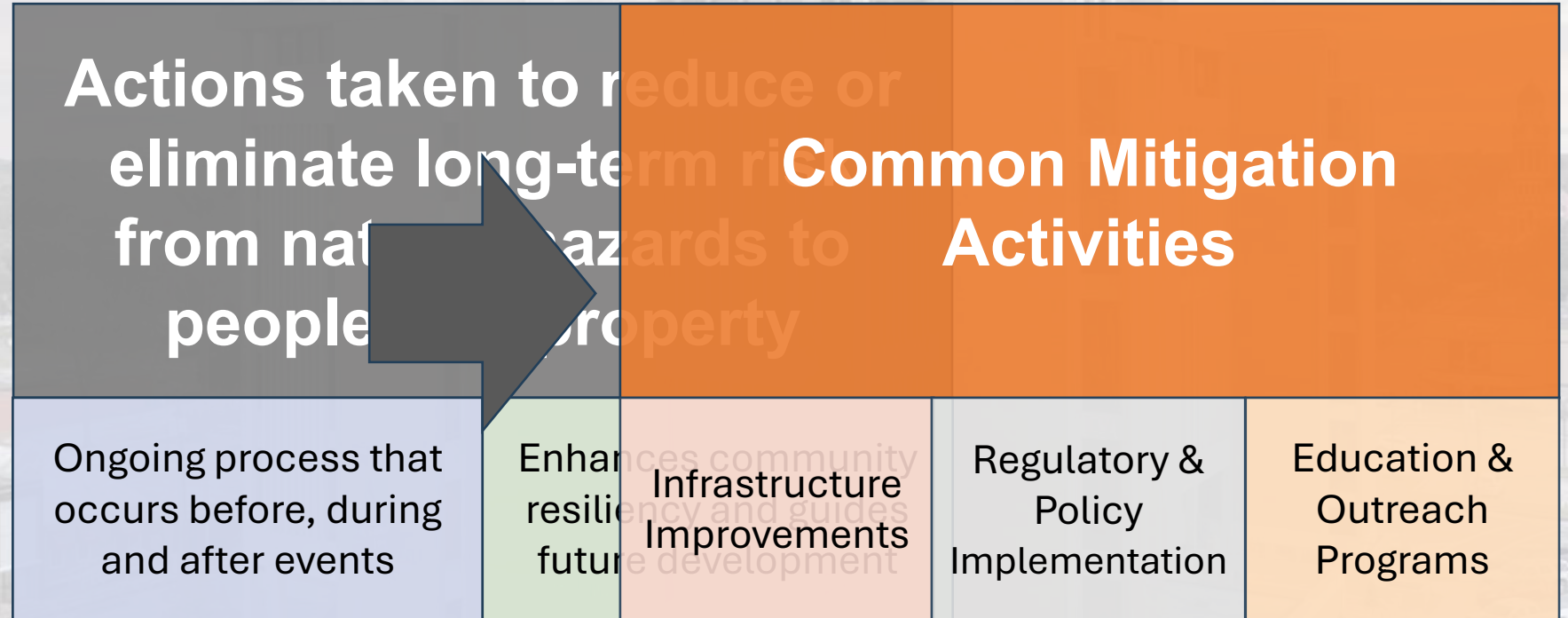
- Stephenson Disaster Management Institute (SDMI) at Louisiana State University
- Non-Academic, Applied Research Unit on campus
- Specialize in providing programmatic support and decision making tools for state and local emergency managers
 - Hazard Mitigation Plans
 - Emergency Operations Plans
 - Geographic Information Systems
 - Application Development
 - Data Visualization
 - Aerial Imagery Collection/Processing



Phases of Emergency Management



What Is Hazard Mitigation?



Benefits of Hazard Mitigation



Saves Lives

Protects
residents and
first
responders



Reduces Property Damage

Increases
building,
infrastructure
and
community
resiliency



Minimizes Economic Disruptions

Reduces
disaster
recovery costs

Why Have A Hazard Mitigation Plan

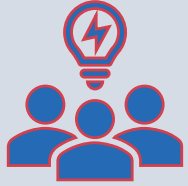
Planning efforts help communities become more resilient and sustainable

- Provides platform for input from diverse group of stakeholders
- Identifies most prevalent hazards in the community
- Outlines a strategy to protect community from hazards

Maintains community eligibility for federal post-disaster mitigation funding

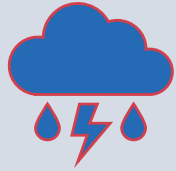
- Disaster Mitigation Act (DMA) of 2000 Section 322
- Title 44 Code of Federal Regulations (CFR) §201.6
- **No Plan = No Mitigation Money = No Projects!**

Hazard Mitigation Plan Requirements



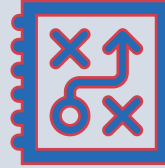
Must include a robust planning committee/ stakeholder group

- Incorporated jurisdictions
- Local/parish agencies
- Local business/ industry
- Underserved populations*



Must identify and evaluate the risk from natural hazards

- Types/sources of hazards
- Location/extent
- Impacts on community
- Previous occurrences
- Potential for future events



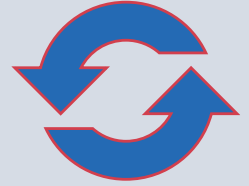
Must outline strategy for reducing impacts for identified risks

- Set clear goals/ objectives
- Identify actions or projects
- Establish timelines, responsible parties & funding sources



Must be formally adopted by all participating jurisdictions

- All HM plans in LA are multi-jurisdictional
- Administered at parish level
- Incorporated communities within parish must also adopt



Must be updated and receive FEMA approval every five years

- Reassess risks, vulnerabilities & mitigation strategy
- Must reflect changes in conditions & development



Misconceptions about Mitigation Plans

Not an Emergency Operations Plan

- It focuses on long-term risk reduction, not immediate disaster response actions

Not a One-time Document

- Should be reviewed and updated periodically

Not Limited to Large-Scale Projects

- Includes both structural (e.g., levees) and non-structural (e.g., building codes) strategies

Not a Guaranteed Funding Source

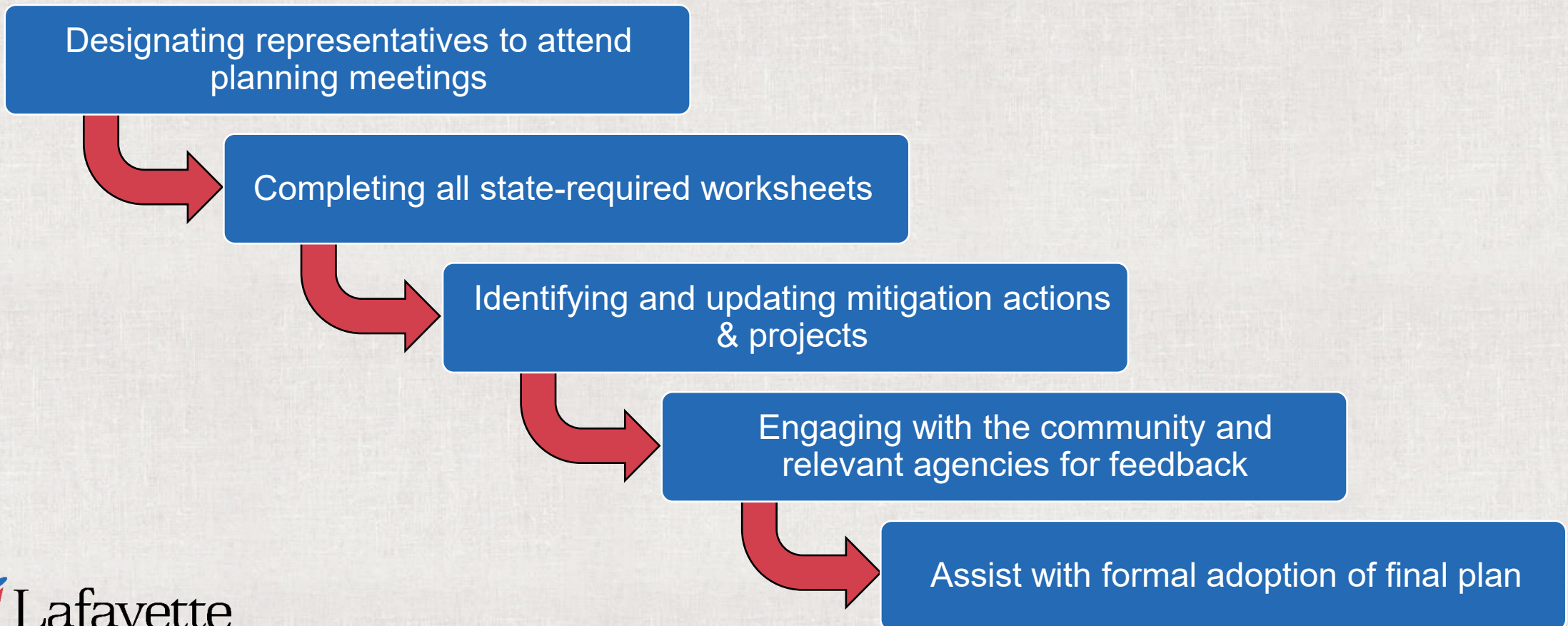
- Helps secure federal/state funds but does not automatically result in project approval

Not a Standalone Effort

- Should align with local comprehensive plans, zoning regulations, and climate adaptation strategies

Planning Committee Expectations

- Parish will serve as the POC throughout the planning process
- Parish and jurisdictions **MUST** demonstrate active participation in the planning process by:



Hazard Identification

Previously Profiled Hazards

- Drought
- Excessive Heat
- Flooding
- Sinkholes
- Thunderstorms
- Tornadoes
- Tropical Cyclones
- Wildfires

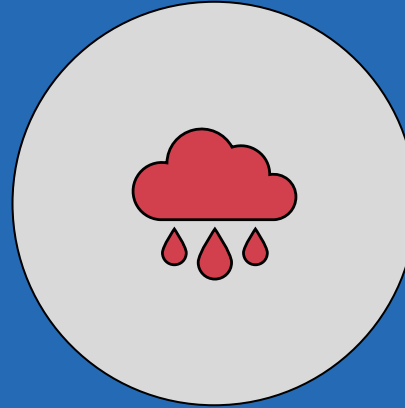
FEMA'S National Risk Index

- Heat Waves
- Hurricanes
- Ice Storms
- Lightning
- Riverine Flooding

Community Rating System (CRS)



The CRS program is a voluntary, incentive-based program that encourages communities to participate in enhanced floodplain management practices

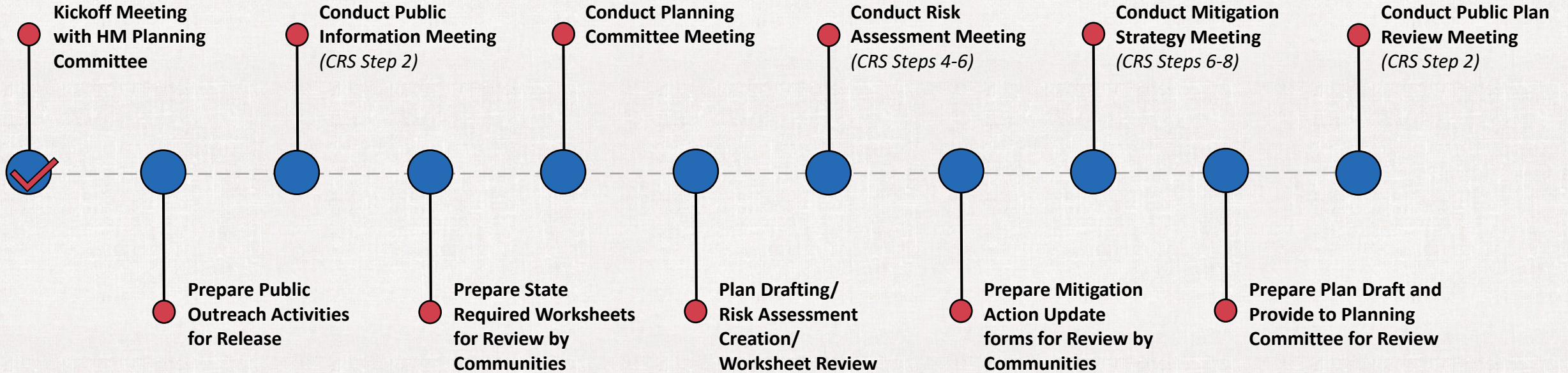


Participating communities can receive flood insurance premium discounts for all NFIP policies, including those outside of the Special Flood Hazard Area (SFHA)

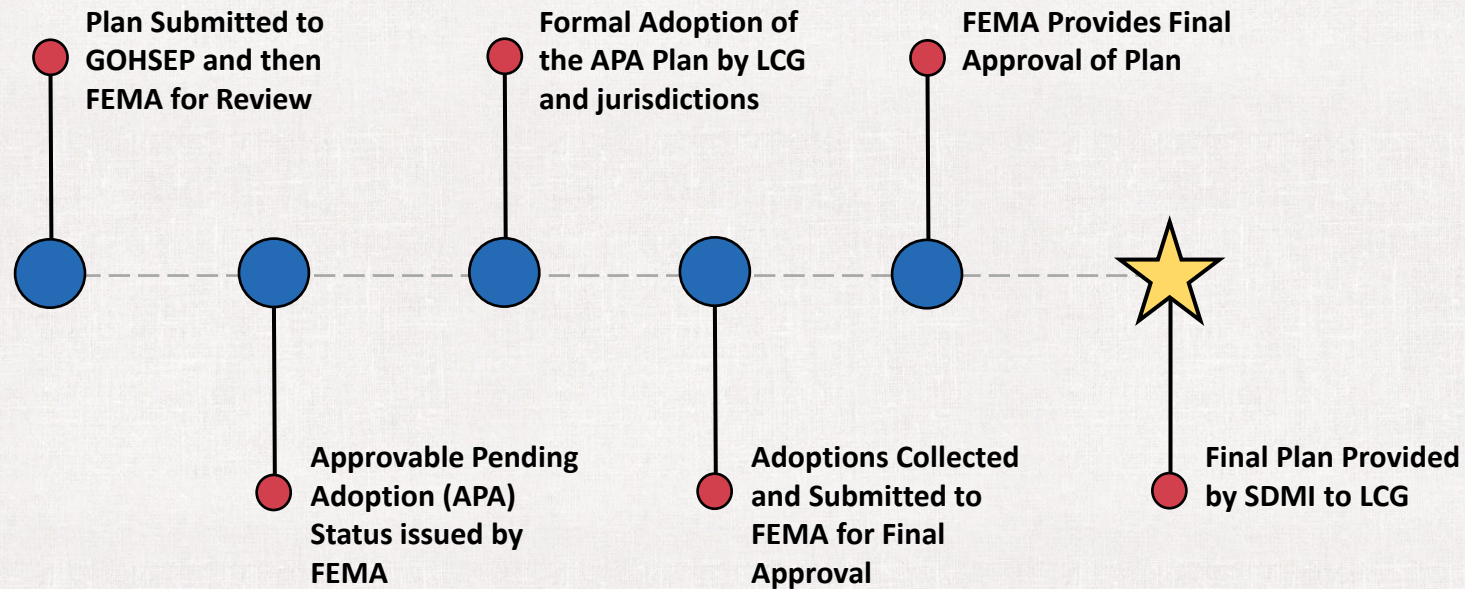


- Lafayette C&P – Class 7
 - 15% Discount
- Carencro – Class 7
 - 15% Discount
- Scott – Class 7
 - 15% Discount

Plan Update Process Timeline



Plan Approval Timeline



The Final Product



Maintains community eligibility for FEMA Hazard Mitigation Assistance grant programs

Provides an assessment of natural disaster-related risks & vulnerabilities

Outlines a hazard mitigation project strategy to increase community resilience

Potentially increases flood insurance premium discounts for CRS-participating communities

SDMI Hazard Mitigation Website

- Repository for materials used during the plan update process
- <https://hmplans.sdmi.lsu.edu/>

The screenshot shows the main navigation and introductory content of the website. The header includes the LSU Stephenson Disaster Management Institute logo and the text 'SDMI HOME'. The main navigation bar contains 'HAZARD MITIGATION' and sub-links for 'Intro', 'Events', 'FEMA Resources', and 'Parish Plans'. A 'Sponsored by' section features the Louisiana State Seal and the heading 'Why We Have Hazard Mitigation Plans'. Below this is a 'CHOOSE A VIEW' section with tabs for 'MAP OF PARISHES' and 'LIST OF PARISHES'. The map view shows a map of Louisiana with a legend for the 'Development Process' and a summary table.

Step 1: Plan Development	Step 2: Plan Review	Step 3: Plan Adoption	Step 4: Completed
4 Parishes currently in this stage	10 Parishes currently in this stage	1 Parishes currently in this stage	45 Parishes currently in this stage

The screenshot shows the detailed page for Lafayette Parish. It includes the 'Lafayette Parish' header, a 'PLAN DUE DATE: JULY 28 2026' indicator, and a 'DEVELOPMENT STATUS' progress bar. The progress bar shows stages: PLAN DEVELOPMENT (KICKOFF MEETING OCT 2025), PLAN REVIEW (TBD), PLAN ADOPTION (TBD), and COMPLETED (TBD). Below this is a 'PARTICIPATING JURISDICTIONS' list including the City of Broussard, City of Carencro, Town of Duson, Lafayette City-Parish Consolidated Government, City of Scott, and City of Youngville. A calendar event for 'OCT 23 LAFAYETTE PARISH KICKOFF/EXECUTIVE OVERVIEW MEETING' is shown. The 'PREVIOUS PLANS' section lists documents from 2021 and 2016, each with a 'DOWNLOAD' button.

Next Steps

- Identify Neighboring Community
 - Vermilion, Iberia, St. Martin, and Acadia Parishes were used in previous plan update
- Timeline Requirements
 - Current plan expires July 28, 2026
 - Five Future Meetings
 - Public Information Meeting
 - Must be held within 60 days of Kickoff Meeting
 - Public Plan Review Meeting
 - Must occur at least two weeks prior to FEMA submission



Contact Us

Chris Rippetoe, CFM

HM Program Manager

crippe2@lsu.edu

(225) 578-6667

Jason Martin

Emergency Management Analyst

jmar293@lsu.edu

(225) 578-6264

