



2026 Rapides Parish Hazard Mitigation Plan Update

Planning Committee Meeting

January 14th, 2026



Introductions

- **Stephenson Disaster Management Institute (SDMI)**
 - Chris Rippetoe – Hazard Mitigation Program Manager
 - Jason Martin – Emergency Management Analyst
- **Governor’s Office of Homeland Security and Emergency Preparedness (GOHSEP)**
 - Lennie LaFleur – Preparedness Program Specialist
- **Rapides Parish OHSEP & Committee Members**
 - Angie Branton – Rapides Parish OHSEP Director



Who is SDMI?

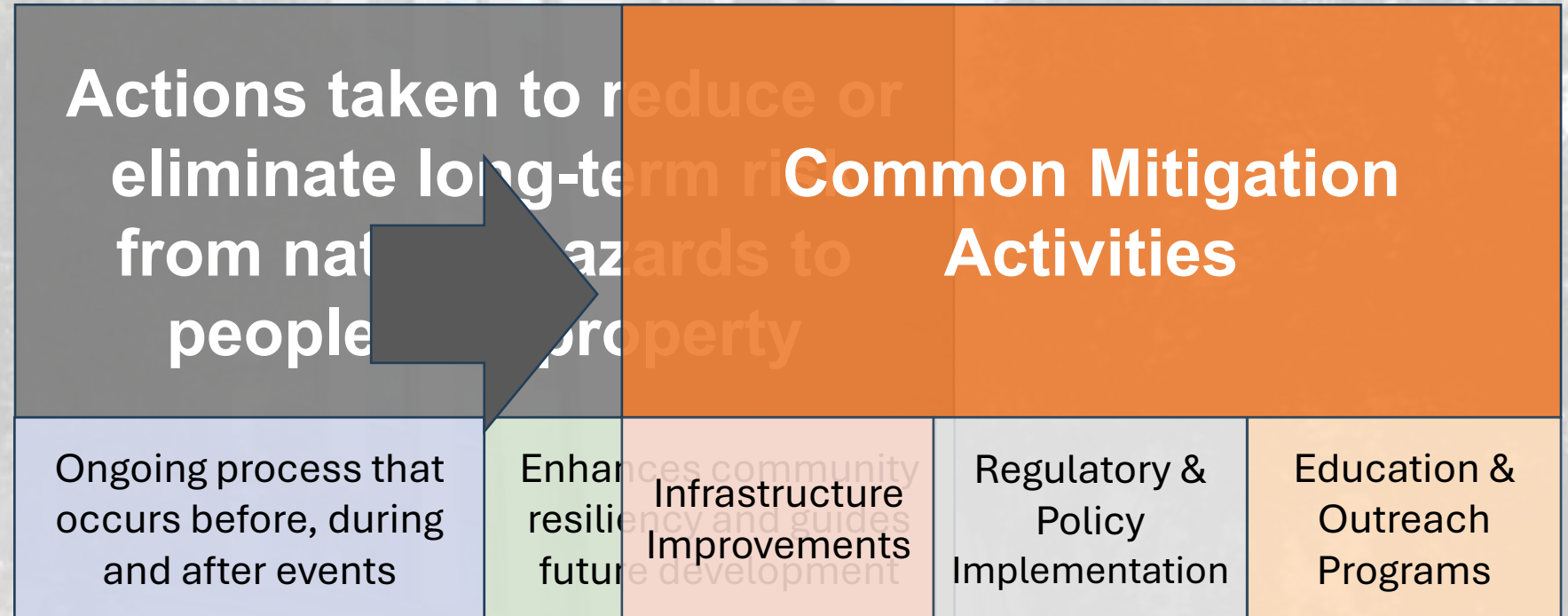
- Stephenson Disaster Management Institute (SDMI) at Louisiana State University
- Non-Academic, Applied Research Unit on campus
- Specialize in providing programmatic support and decision making tools for state and local emergency managers
 - Hazard Mitigation Plans
 - Emergency Operations Plans
 - Geographic Information Systems
 - Application Development
 - Data Visualization
 - Aerial Imagery Collection/Processing



Phases of Emergency Management



What Is Hazard Mitigation?



Benefits of Hazard Mitigation



Saves Lives

Protects
residents and
first
responders



Reduces Property Damage

Increases
building,
infrastructure
and
community
resiliency



Minimizes Economic Disruptions

Reduces
disaster
recovery costs

Why Have A Hazard Mitigation Plan

Planning efforts help communities become more resilient and sustainable

- Provides platform for input from diverse group of stakeholders
- Identifies most prevalent hazards in the community
- Outlines a strategy to protect community from hazards

Maintains community eligibility for federal post-disaster mitigation funding

- Disaster Mitigation Act (DMA) of 2000 Section 322
- Title 44 Code of Federal Regulations (CFR) §201.6
- **No Plan = No Mitigation Money = No Project Funding!**



Hazard Mitigation Planning is a process that identifies natural hazard risks and develops strategies to reduce these risks



Plan Update Process



Hazard Mitigation Plan Requirements



Must be updated and receive FEMA approval every five years

- Reassess risks, vulnerabilities & mitigation strategy
- Must reflect changes in conditions & development



Must include a robust planning committee/ stakeholder group

- Incorporated jurisdictions
- Local/parish agencies
- Local business/ industry
- Underserved populations



Must identify and evaluate the risk from natural hazards

- Types/sources of hazards
- Location/extent
- Impacts on community
- Previous occurrences
- Potential for future events



Must outline strategy for reducing impacts for identified risks

- Set clear goals/ objectives
- Identify actions or projects
- Establish timelines, responsible parties & funding sources



Must be formally adopted by all participating jurisdictions

- All HM plans in LA are multi-jurisdictional
- Administered at parish level
- Incorporated communities within parish must also adopt

Planning Committee Expectations

- Parish will serve as the POC throughout the planning process
- Parish and jurisdictions **MUST** demonstrate active participation in the planning process by:

Designating representatives to attend planning meetings

Completing all state-required worksheets

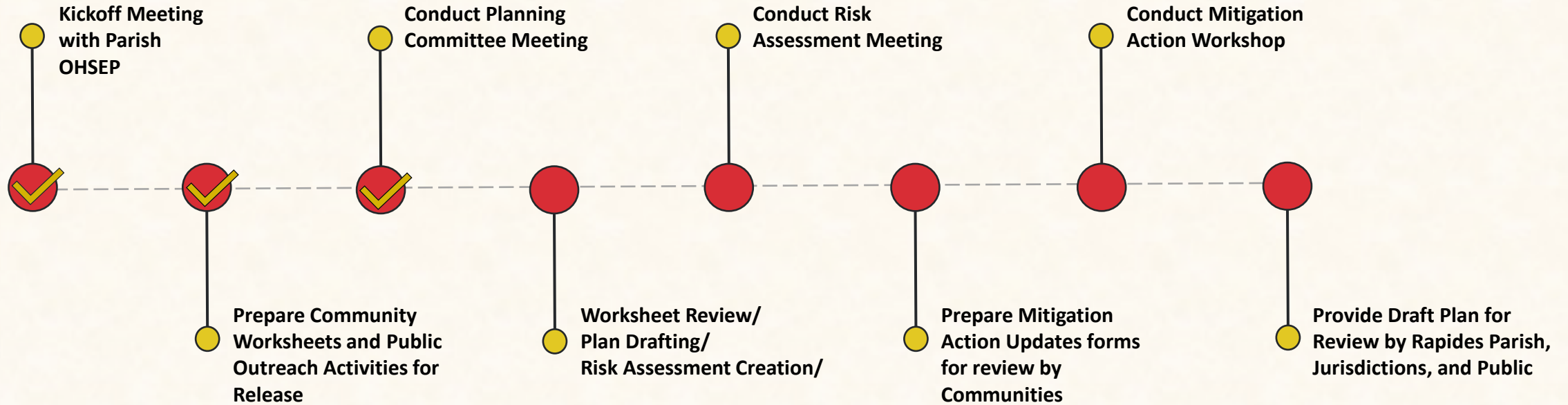
Identifying and updating mitigation actions & projects

Engaging with the community and relevant agencies for feedback

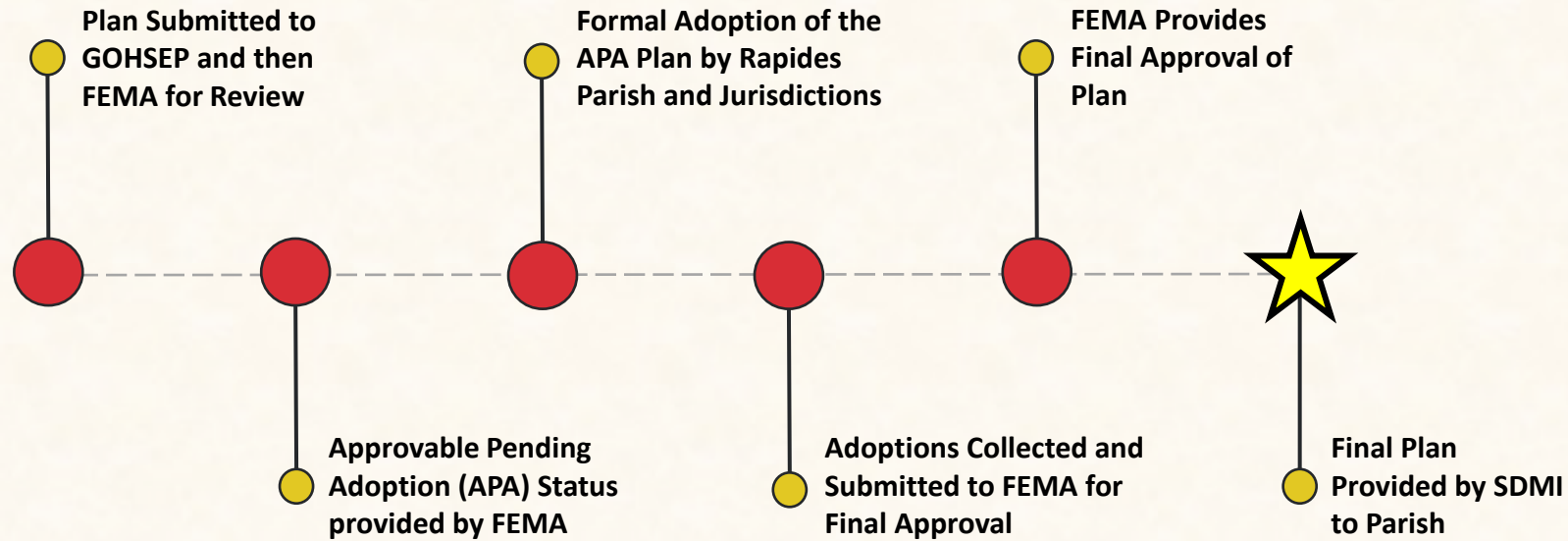
Formally adopting the plan



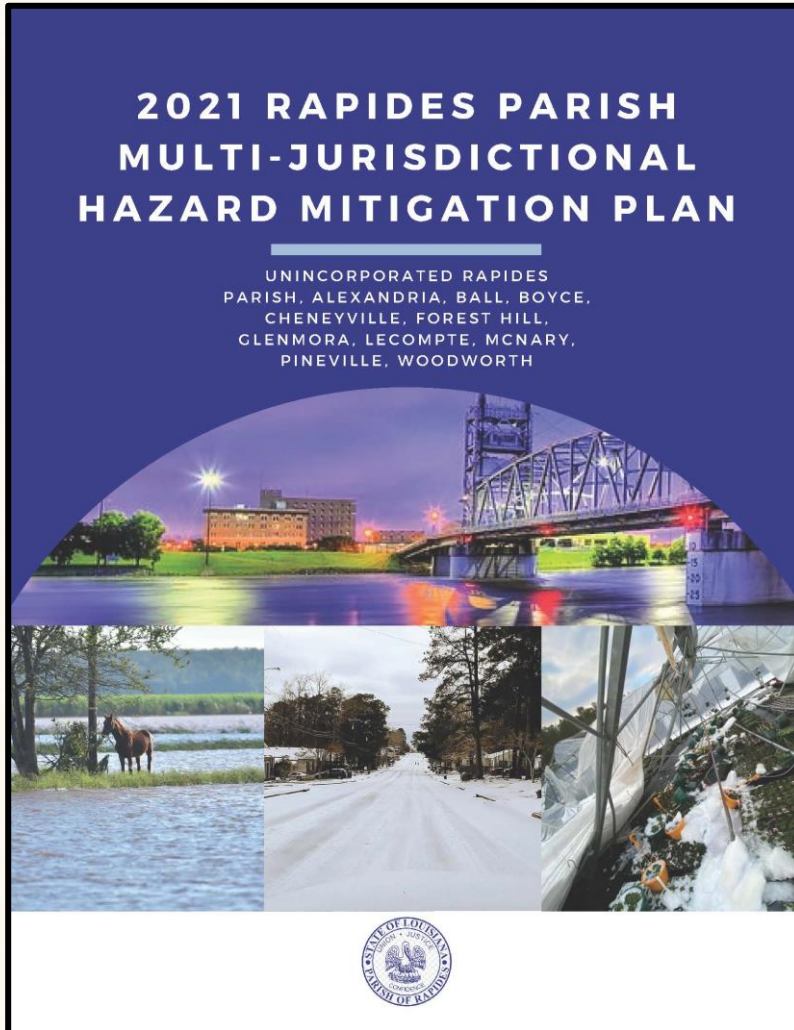
Plan Update Process Timeline



Plan Approval Timeline



Plan Development



Plan Layout

Main Sections

1. Introduction
2. Hazard Identification & Risk Assessment
3. Capability Assessment
4. Mitigation Strategy

Appendices

- A. Planning Process
- B. Plan Maintenance
- C. Parish Critical Facilities
- D. Plan Adoption
- E. State Required Worksheets



Section 1: Introduction

- Parish Description & Geography
- Updated Census Information
 - Total Population
 - Demographic Data
- Economic update
 - Detail major economic sectors
 - New companies that are having a positive economic impact on the parish



Section 2: Hazard Identification and Risk Assessment

- Previously Profiled Hazards
- Newly Identified Hazards
- Previous Occurrences
- Probability of Future Events
- Potential Losses due to an Event
- Zoning and Land Use
- Impacts on Critical Facilities
- Impacts from Future Development
- Future Impacts due to Climate Change



Hazard Identification

Previously Profiled Hazards

- Drought
- Excessive Heat
- Flooding
- Thunderstorms
- Tornadoes
- Tropical Cyclones
- Wildfires
- Winter Weather

FEMA'S National Risk Index

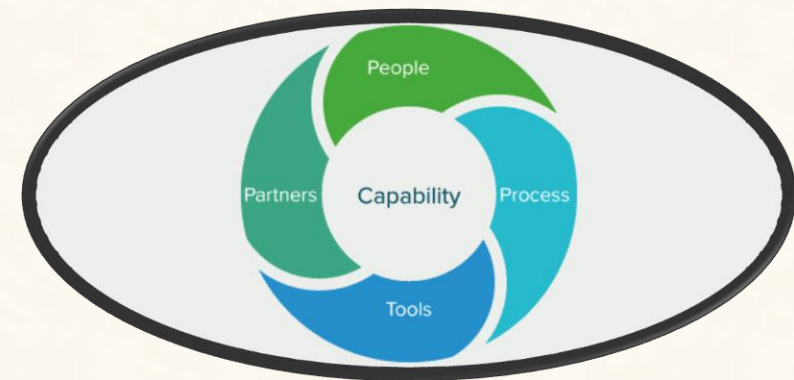
- Cold Wave (RH)
- Drought (RH)
- Ice Storm (RH)
- Lightning (RH)
- Heat Wave (RM)
- Hurricane (RM)
- Inland Flooding (RM)
- Strong Wind (RM)
- Tornado (RM)
- Winter Weather (RM)



Section 3: Capability Assessment

Primary types of capabilities for reducing long-term vulnerability through mitigation planning are:

- Planning and Regulatory
- Administrative and Technical
- Financial
- Educational and Outreach



Section 4: Mitigation Strategy



Set Clear Goals & Objectives

Define what the plan aims to achieve (e.g., reducing flood damage, improving power resilience)



Develop & Prioritize Projects

Rank mitigation actions based on feasibility, cost-effectiveness, and community impact



Integrate with Other Plans

Align with comprehensive land use plans, zoning regulations, and capital improvement programs



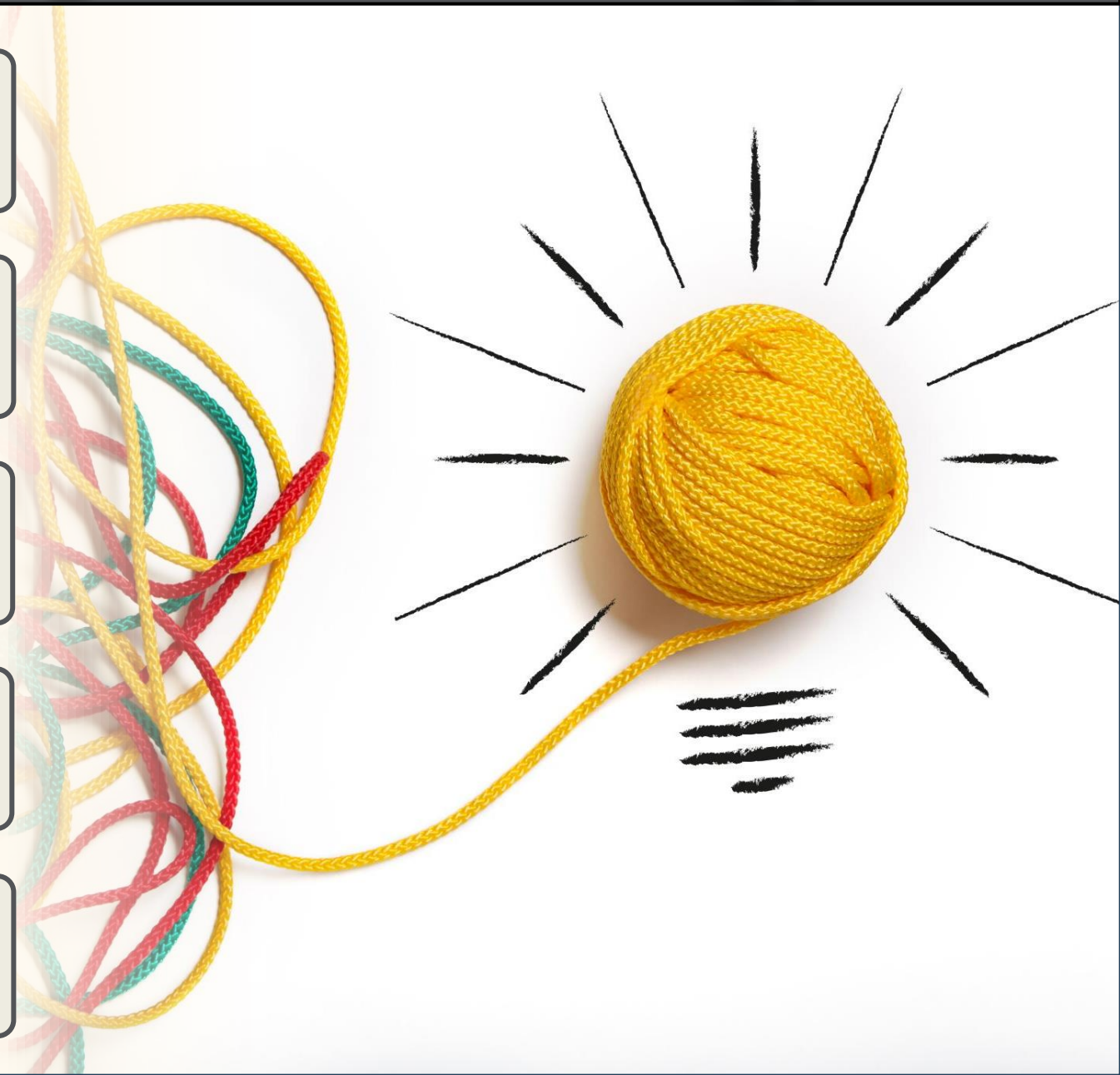
Seek Funding & Partnerships

Leverage federal, state, and local resources while collaborating with stakeholders



Monitor, Evaluate & Update

Regularly review progress and adjust strategies to reflect new risks and opportunities.



Rapides Parish Hazard Mitigation Goals



Identify and pursue preventative measures that will reduce future damages from hazards.



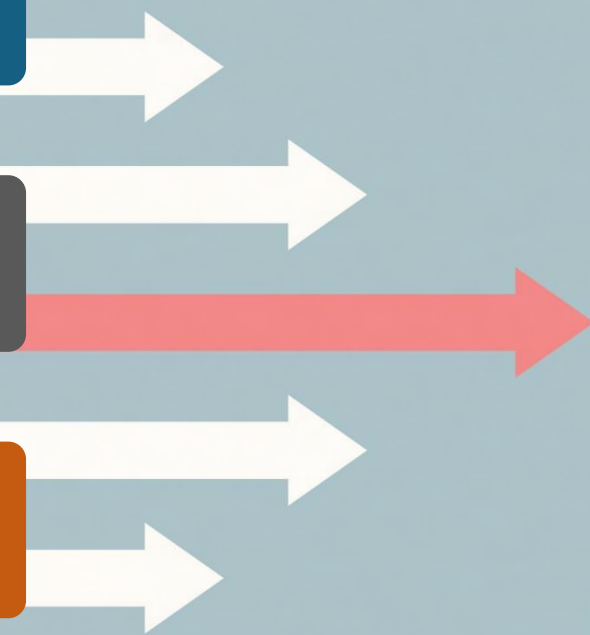
Enhance public awareness and understanding of disaster preparedness.



Reduce repetitive flood losses in the parish and municipalities.



Facilitate sound building practices in the parish so as to reduce or eliminate the potential impact of hazards.



Appendix A: Planning Process

- Overview of planning process
- Planning committee members identified
- Meeting documentation and summaries
- Discussion of neighboring community participation



Appendix B: Plan Maintenance

- Review of HM Plan **annual** maintenance by the Rapides Parish OHSEP Director and planning committee members
- Assign responsible parties for review and edits of the plan



Appendix C: Critical Facilities

- Updated list of critical facilities
- Identifies which facilities are at risk to each profiled hazard
- Facilities must be owned by the parish or jurisdiction



Appendix D: Plan Adoption

- Parish council resolution must be adopted, signed, and placed into the final planning document
- Adoption can take place before submission **OR** after FEMA issues Approvable Pending Adoption (APA) status.

On motion by Mr. Ollie Overton, seconded by Mr. Joe Bishop, the following resolution was presented and unanimously adopted:

RESOLUTION
RAPIDES PARISH HAZARD MITIGATION PLAN 2021

WHEREAS, the Parish of Rapides has prepared a multi-hazard mitigation plan hereby known as the RAPIDES PARISH HAZARD MITIGATION PLAN - 2021 update in accordance with the Disaster Mitigation Act of 2000; and

WHEREAS, RAPIDES PARISH has participated in the process to prepare a DMA compliant Hazard Mitigation Plan based in the FEMA guidance available in the How to Guides;

WHEREAS, RAPIDES PARISH is participating in the Hazard Mitigation Plan prepared by the Rapides Parish Police Jury under the oversight of a Steering Committee comprised of Parish-Wide representatives;

WHEREAS, Rapides Parish and local city representatives and governments have participated in the mitigation planning process;

WHEREAS, appropriate opportunity for input by public and community officials has been provided through meeting notices, open meetings and availability of draft documents;

WHEREAS, the Plan has been recommended for adoption by the steering committee;

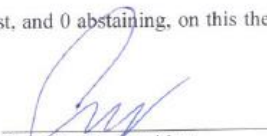
WHEREAS, adoption of the Plan is required prior to further consideration for FEMA funding under the following programs:

Pre-Disaster Mitigation
Hazard Mitigation Grant Program
Flood Mitigation Assistance Program

Therefore, the RAPIDES PARISH POLICE JURY does hereby adopt the Rapides Parish Multi-Hazard Mitigation Plan Update 2021.

ADOPTED by a vote of 7 in favor and 0 against, and 0 abstaining, on this the 9th day of August, 2021.


Laurel Smith, Secretary
Rapides Parish Police Jury


Craig Smith, President
Rapides Parish Police Jury



Appendix E: State Required Worksheets



Capability Assessment



National Flood Insurance Program



Critical Facilities/Building Inventory



Vulnerable Populations



Capability Assessment

Local mitigation capabilities are existing authorities, polices and resources that reduce hazard impacts or that could be used to implement hazard mitigation activities. Please complete the tables and questions in the worksheet as completely as possible.

Planning and Regulatory

Please indicate which of the following plans and regulatory capabilities your jurisdiction has in place.

Plans	Yes / No	Comments
Comprehensive / Master Plan	Yes	Rapides Parish & City of Alexandria, La.
Capital Improvements Plan	Yes	Budget & Capital Budget
Economic Development Plan	No	In Progress
Local Emergency Operations Plan	Yes	May 8, 2019---Ord. No. 46-2019
Continuity of Operations Plan	No	
Transportation Plan	No	
Stormwater Management Plan	Yes	Jan. 24, 2006---Ord. No. 25.2006---Ms4---COA Planning
Community Wildfire Protection Plan	No	
Other plans (redevelopment, recovery, coastal zone management)	No	
Building Code, Permitting and Inspections		
	Yes / No	Comments
Building Code	Yes	ICC Building Codes
Building Code Effectiveness Grading Schedule (BCEGS) Score	No	
Fire Department ISO/PIAL rating	Yes	January 2018 -- PIAL Rating 2
Site plan review requirements	Yes	Sep. 9, 2015---Ord. No. 140-2015---COA Planning
Land Use Planning and Ordinances		
	Yes / No	Comments
Zoning Ordinance	Yes	Sep. 9, 2015---Ord. No. 140-2015---COA Planning
Subdivision Ordinance	Yes	Sep. 9, 2015---Ord. No. 140-2015---COA Planning
Floodplain Ordinance	Yes	Sep. 9, 2015---Ord. No. 140-2015---COA Planning
Natural Hazard Specific Ordinance (stormwater, steep slope, wildfire)	Yes	
Flood Insurance Rate Maps	Yes	COA Planning/FIRM Maps
Acquisition of land for open space and public recreation uses	No	
Other	No	

Place answers in Yes/No column, add comments if necessary (i.e. what year the plan was updated last)



National Flood Insurance Program

National Flood Insurance Program (NFIP) - City of Alexandria		
Insurance Summary		
How many NFIP policies are in the community? What is the total premium and coverage?		Comments
How many claims have been paid in the community? What is the total amount of paid claims? How many of the claims were for substantial damage?		
How many structures are exposed to flood risk within the community?		
Describe any areas of flood risk with limited NFIP policy coverage.		
Staff Resources		
Is the Community FPA or NFIP Coordinator certified?		Comments
Is flood plain management an auxiliary function?		
Provide an explanation of NFIP administration services (e.g., permit review, GIS, education or outreach, inspections, engineering capability)		
What are the barriers to running an effective NFIP program in the community, if any?		
Compliance History		
Is the community in good standing with the NFIP?		Comments
Are there any outstanding compliance issues (i.e., current violations)?		
When was the most recent Community Assistance Visit (CAV) or Community Assistance Contact (CAC)?		
Is a CAV or CAC scheduled or needed? If so when?		
Regulation		
When did the community enter the NFIP?		Comments
Are the FIRMs digital or paper?		
When did the community adopt the latest FIRMs?		
Do floodplain development regulations meet or exceed FEMA or State minimum requirements? If so, in what ways?		
Community Rating System (CRS)		
Does the community participate in CRS?		Comments
What is the community's CRS Class Ranking?		
Does the plan include CRS planning requirements?		

- Involve local/parish floodplain managers for this information



Building Inventory

Community Owned Building Information - City of Alexandria

Name of Building	Purpose of Building	Address	City	Latitude	Longitude	Assessed Value	Date Built	Construction Type
Bleachers & Concessions Bringham Baseball Stadium	Baseball Field	1 Babe Ruth Drive	Alexandria	31.286629	-92.458773	\$1,165,600	1992	Concrete
Home Team Clubhouse Bringham Baseball Stadium	Home Team Clubhouse	1 Babe Ruth Drive	Alexandria	31.286113	-92.458023	\$186,600	1992	Wood
Visitors Clubhouse Bringham Baseball Stadium	Visitors Clubhouse	1 Babe Ruth Drive	Alexandria	31.287301	-92.458188	\$162,500	1988	Wood
Amphitheater	Assembly	1 Johnston Street	Alexandria	31.311942	-92.442981			
Beagle Club	Public Safety - K-9 Training	100 Block Harold Miles Park Road	Alexandria	31.345627	-92.549965	\$95,000	1940	Wood
Main Building (Harold Miles Park)	Recreational Building	100 Block Harold Miles Park Road	Alexandria	31.343584	-92.538623	\$122,700	1940	Concrete
Pit Building (Harold Miles Park)	Pit Building	100 Block Harold Miles Park Road	Alexandria	31.343597	-92.538996	\$5,800	1940	Concrete
Restrooms (Harold Miles Park)	Restrooms @ Harold Miles Park	100 Block Harold Miles Park Road	Alexandria	31.343877	-92.539025	\$19,600	1960	Concrete
Storage Shed (Harold Miles Park)	Storage Shed	100 Block Harold Miles Park Road	Alexandria	31.343725	-92.539044	\$15,500	1960	Wood
Water Station (McNutt Avenue)	Water Station	100 Block Harold Miles Park Road	Alexandria	31.340919	-92.53931	\$21,400	1950	Reinforced Masonry
Alexandria Police Department	Law Enforcement	1000 Bolton Avenue	Alexandria	31.303332	-92.453177	\$6,086,000	1999	Reinforced Masonry
Bus Station	Bus Station	1001 Main Street	Alexandria	31.311772	-92.443633	\$427,100	1987	Reinforced Masonry
D.G. Hunter Electric Generating Station	Generating Station	1011 N. Third Street	Alexandria	31.320964	-92.461771	\$89,161,300	1957 Upgraded 1976	Concrete
Generating Station Storage Building	Storage Building	1011 N. Third Street	Alexandria	31.320964	-92.461771	\$39,600	1950	Metal
Generating Station Storage Shed	Storage Building	1011 N. Third Street	Alexandria	31.320964	-92.461771	\$12,400	1950	Metal
Generating Station Maintenance	Maintenance Building	1011 N. Third Street	Alexandria	31.320964	-92.461771	\$78,000	1968	Metal
Generating Station Water Treatment	Water Treatment Station	1011 N. Third Street	Alexandria	31.320114	-92.462306	\$180,000	1950	Reinforced Masonry

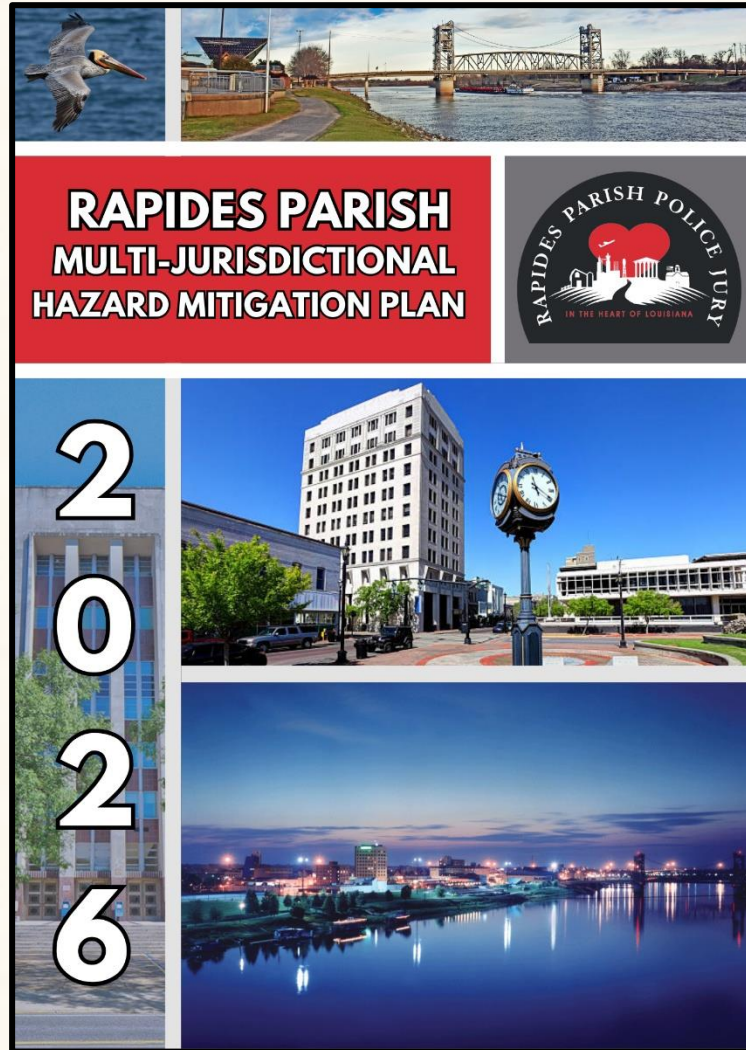


Vulnerable Populations

Vulnerable Populations Worksheet - Alexandria					
All Hospitals (Private or Public)					
Name	Street	City	Zip Code	Latitude	Longitude
Alexandria Emergency Hospital	5900 Coliseum Boulevard	Alexandria	71303	31.29731	-92.51022
Alexandria Heart & Vascular	224 Pecan Park Avenue	Alexandria	71303	31.29386	-92.49015
Central Louisiana Surgical Hospital	651 North Bolton Avenue	Alexandria	71303	31.31539	-92.46783
Christus Community Clinic	3351 Masonic Drive	Alexandria	71301	31.28186	-92.46048
Christus Community Clinic - Alexandrai	3000 South MacArthur Drive	Alexandria	71301	31.2668	-92.45632
Christus Dubuis Hospital	4801 Jackson Street Extension B	Alexandria	71301	31.27545	-92.48169
Christus Primary Care - Versailles	80 Versailles Boulevard Suite A	Alexandria	71303	31.29057	-92.50576
Christus St. Frances Cabrini Hospital	3331 Masonic Drive	Alexandria	71301	31.28309	-92.46183
Compass Behavioral Center of Alexandria	6410 Masonic Drive	Alexandria	71301	31.25458	-92.48159
Nursing Homes (Private or Public)					
Name	Street	City	Zip Code	Latitude	Longitude
Adams Community Home	1214 President Drive	Alexandria	71303	31.32694	-92.4837
Brookdale Alexandria	351 Windermere Boulevard	Alexandria	71303	31.29436	-92.49071
Buchanan Group Home	1292 President Drive	Alexandria	71303	31.32367	-92.48578
Canterbury House Assisted Living	1101 16th Street	Alexandria	71301	31.30644	-92.45171
Cleveland Community Home	5621 Hera Street	Alexandria	71303	31.27303	-92.49337
England Oaks Active Adult Living	6956 England Drive	Alexandria	71303	31.32794	-92.53114
Filmore Group Home	1155 President Drive	Alexandria	71303	31.32988	-92.48267
Greco Community Home	444 Browns Bend Road	Alexandria	71303	31.31591	-92.49554
Harding Community Home	520 Westwind Drive	Alexandria	71303	31.30019	-92.51778
Harrison Group Home	5708 North Drive	Alexandria	71301	31.26171	-92.46596
Hope House	5115 South MacArthur Drive	Alexandria	71302	31.25558	-92.43963
Mobile Home Parks					
Name	Street	City	Zip Code	Latitude	Longitude
Cabana Mobile Estates	6101 North Bolton Avenue	Alexandria	71303	31.3415	-92.51791
Culpepper Estates	3022 Culpepper Road	Alexandria	71301	31.26377	-92.45861
Donal Drive	5503 Donald Drive	Alexandria	71302	31.25055	-92.44066
Duhon Lane	3936 Duhon Lane	Alexandria	71302	31.26578	-92.44274
Bayou Mobile Home Park	650 North Bolton Avenue	Alexandria	71301	31.31534	-92.46655
South MacArthur Drive--Lots 1-9 on Service Road	4500 South MacArthur Drive	Alexandria	71302	31.25751	-92.44408



The Final Product



Maintains community eligibility for FEMA Hazard Mitigation Assistance grant programs

Provides an assessment of natural disaster-related risks & vulnerabilities

Outlines a hazard mitigation project strategy to increase community resilience



Parish Mitigation Survey

- Collects information regarding perceptions of local hazards and mitigation efforts
- Results will be included in the plan if there are enough responses

<https://tinyurl.com/RapidesHMP2026>



SDMI Hazard Mitigation Website

- Repository for materials used during the plan update process

<https://hmplans.sdmi.lsu.edu/>

The screenshot shows the main navigation and introductory content of the website. At the top, it features the LSU Stephenson Disaster Management Institute logo and the text 'SDMI HOME'. Below this is a yellow 'HAZARD MITIGATION' header with sub-navigation for 'Info', 'Events', 'FEMA Resources', and 'Parish Plans'. A 'Sponsored by' section includes the Louisiana Department of Transportation and Development logo and a section titled 'Why We Have Hazard Mitigation Plans' with explanatory text. A 'CHOOSE A VIEW' section offers 'MAP OF PARISHES' and 'LIST OF PARISHES'. The main content area features a map of Louisiana with a legend for 'Development Process' and a progress bar showing the number of parishes in each stage.

Step 1: Plan Development	Step 2: Plan Review	Step 3: Plan Adoption	Step 4: Completed
3 Parishes currently in this stage	7 Parishes currently in this stage	3 Parishes currently in this stage	46 Parishes currently in this stage

The screenshot displays the 'Rapides Parish' page, which provides a detailed view of the current plan's development status. It includes a 'PLAN DUE DATE: NOVEMBER 16 2026' and a 'DEVELOPMENT STATUS' progress bar. A 'PARTICIPATING JURISDICTIONS' list includes the City of Alexandria, Village of Forest Hill, City of Pineville, Town of Ball, Town of Grammos, Rapides Parish, unincorporated areas, Town of Boyce, Town of Lecompte, Town of Woodworth, and Town of Cheneyville. A 'MEETING #1: RAPIDES PARISH HMP KICKOFF MEETING' is scheduled for November 18, 2025. The 'PREVIOUS PLANS' section lists materials from 2021 and 2016, each with a 'DOWNLOAD' button. A 'Survey' section is also present with an 'Access Survey' button.



Next Steps

- Confirm Neighboring Community
 - Grant Parish was used in previous plan
- Timeline Requirements
 - Current plan expires November 16, 2026
 - Future Meeting Dates
 - Risk Assessment: Mar 4-5 or Mar 9-13
 - Mitigation Strategy: Mar 24-26 or Mar 31-April 2
 - Public Plan Review Period: May 11-22
- Plan Submission to FEMA
 - Decide whether to adopt prior to FEMA submission



Contact Us

Chris Rippetoe, CFM

HM Program Manager

crippe2@lsu.edu

(225) 578-6667

Jason Martin

Emergency Management Analyst

jmar293@lsu.edu

(225) 578-6264



