



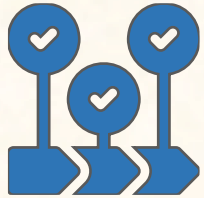
2026 Tangipahoa Parish Hazard Mitigation Plan Update

Planning Committee Meeting

October 14th, 2025



Agenda



**Plan Update Process
Review**



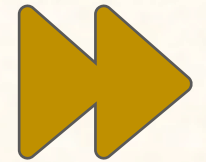
**Plan Development
& Layout Review**



**Community
Worksheets
Discussion**



**Public Outreach
Activities**



**Review of
Next Steps**

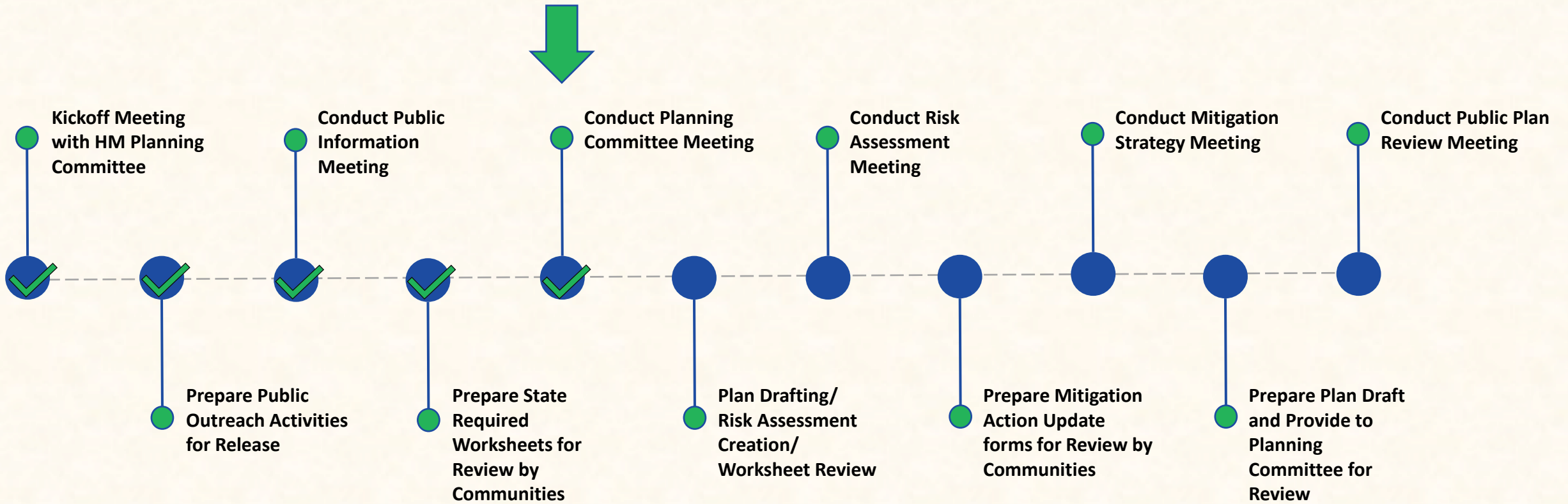


Hazard Mitigation Planning is a process that identifies natural hazard risks and develops strategies to reduce these risks



Plan Update Process

Plan Update Process Timeline



HMP Update Requirements



Must be updated and receive FEMA approval every five years

- Reassess risks, vulnerabilities & mitigation strategy
- Must reflect changes in conditions & development



Must include a robust planning committee/ stakeholder group

- Incorporated jurisdictions
- Local/parish agencies
- Local business/ industry
- Underserved populations



Must identify and evaluate the risks from natural hazards

- Types/sources of hazards
- Location/extent
- Impacts on community
- Previous occurrences
- Potential for future events



Must outline strategy for reducing impacts for identified risks

- Set clear goals/ objectives
- Identify actions or projects
- Establish timelines, responsible parties & funding sources



Must be formally adopted by all participating jurisdictions

- All HM plans in LA are multi-jurisdictional
- Administered at parish level
- Incorporated communities within parish must also adopt

Planning Committee Expectations

- Parish serves as the POC throughout the planning process
- Parish and jurisdictions **MUST** demonstrate active participation in the planning process by:

Designating representatives to attend planning meetings

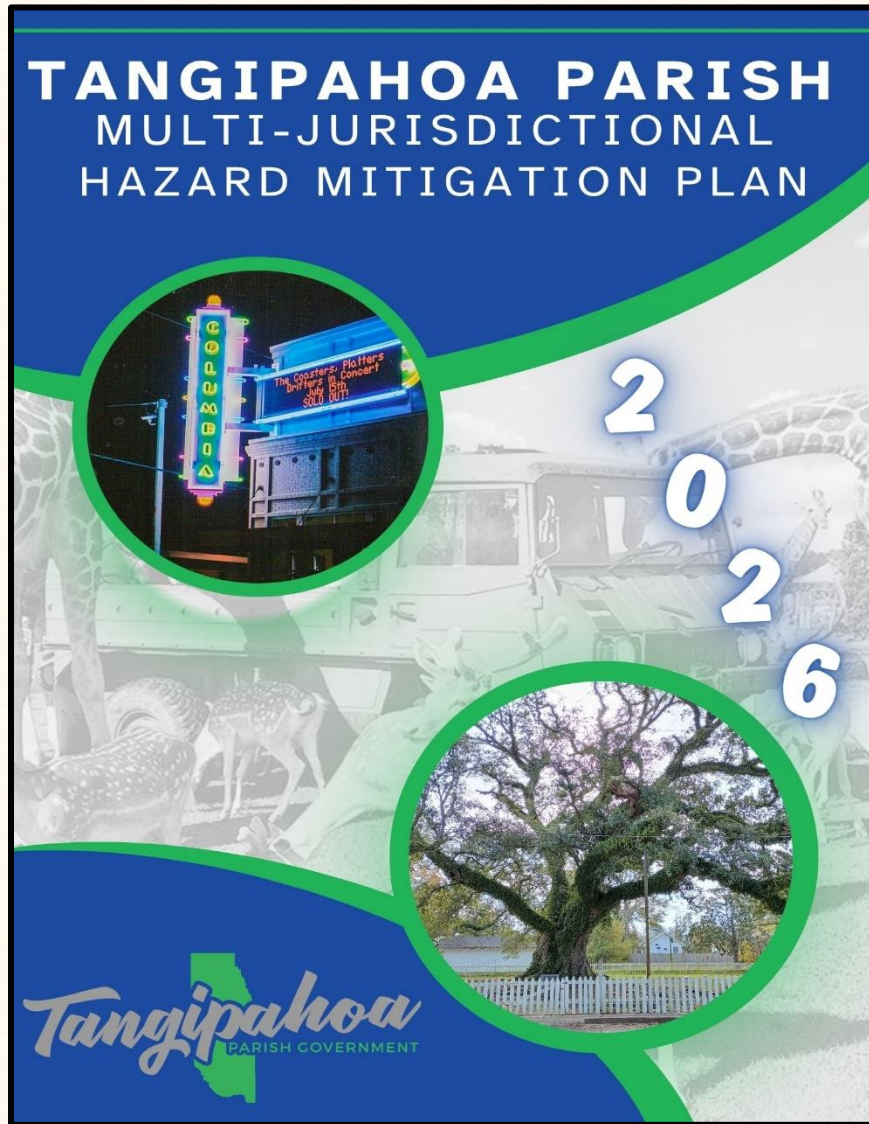
Completing all state-required worksheets

Identifying and updating mitigation actions & projects

Engaging with the community and relevant agencies for feedback

Assisting with final plan adoption

Plan Development



Plan Layout

Main Sections

1. Introduction
2. Hazard Identification & Risk Assessment
3. Capability Assessment
4. Mitigation Strategy

Appendices

- A. Planning Process
- B. Plan Maintenance
- C. Parish Critical Facilities
- D. Plan Adoption
- E. State Required Worksheets
- F. CRS Element 512.a

Section 1: Introduction

- Parish Description & Geography
- Updated Census Information
 - Total Population
 - Population Density
- Economic update
 - Detail major economic sectors
 - New companies that are having a positive economic impact on the parish



Section 2: Hazard Identification and Risk Assessment

- Previously Profiled Hazards
- Newly Identified Hazards
- Previous Occurrences
- Probability of Future Events
- Potential Losses due to a Hazard Event
- Zoning and Land Use
- Impacts on Critical Facilities
- Impacts from Future Development
- Future Impacts due to Changes in Environmental Conditions

Hazard Identification and Risk Assessment

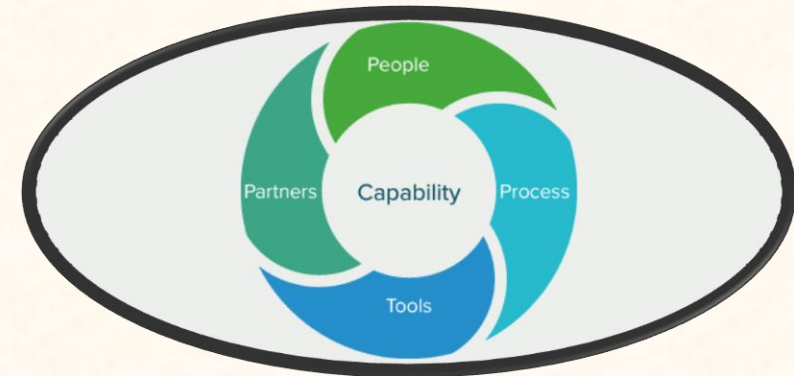
Hazards For Inclusion*	
Flooding	99.2 (Relatively High)
Tropical Cyclones	97.0 (Relatively High)
Lightning	97.0 (Relatively High)
Ice Storm	92.6 (Relatively High)
Tornadoes	88.6 (Relatively Moderate)
Heat Wave	83.8 (Relatively Moderate)
Winter Weather	78.8 (Relatively Moderate)
Wildfires	73.3 (Relatively Low)
Strong Wind	63.0 (Relatively Moderate)

*Risk Index scores are calculated as: Expected Annual Loss x (Social Vulnerability/Community Resilience). Visit hazards.fema.gov/nri for additional information on the National Risk Index

Section 3: Capability Assessment

Primary types of capabilities for reducing long-term vulnerability through mitigation planning are:

- Planning and Regulatory
- Administrative and Technical
- Financial
- Educational and Outreach



Section 4: Mitigation Strategy



Set Clear Goals & Objectives

Define what the plan aims to achieve (e.g., reducing flood damage, improving power resilience)



Develop & Prioritize Projects

Rank mitigation actions based on feasibility, cost-effectiveness, and community impact



Integrate with Other Plans

Align with comprehensive land use plans, zoning regulations, and capital improvement programs



Seek Funding & Partnerships

Leverage federal, state, and local resources while collaborating with stakeholders



Monitor, Evaluate & Update

Regularly review progress and adjust strategies to reflect new risks and opportunities.



Tangipahoa Parish Hazard Mitigation Goals



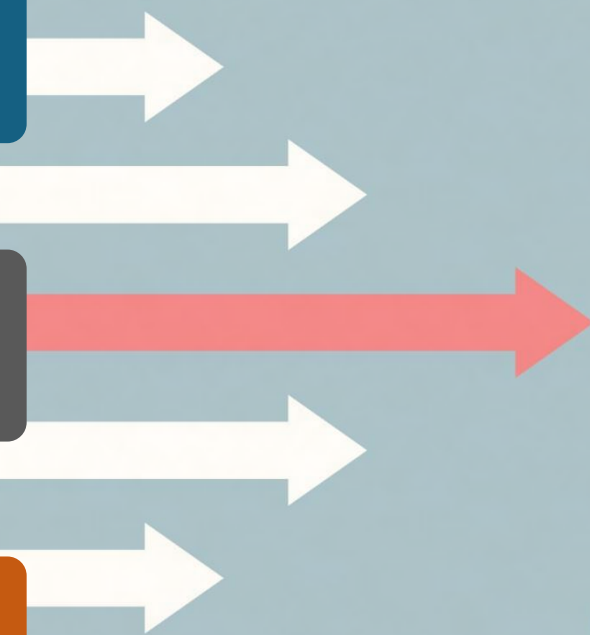
Identify and Pursue preventative measures that will reduce future damages from hazards.



Reduce repetitive flood losses in the Parish and in municipalities



Regulate sound development in the Parish and municipalities, so as to reduce or eliminate the potential impact of hazards



Appendix A: Planning Process

- Overview of planning process
- Planning committee members identified
- Meeting documentation and summaries
- Discussion of neighboring community participation



Appendix B: Plan Maintenance

- Review of HM Plan **annual** maintenance by the Tangipahoa Parish OHSEP Director and planning committee members
- Assign responsible parties for review and edits of the plan



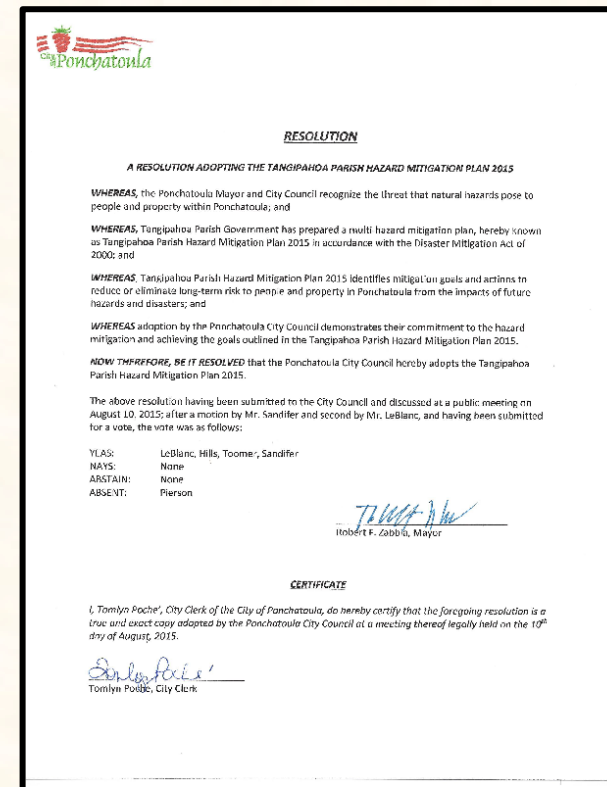
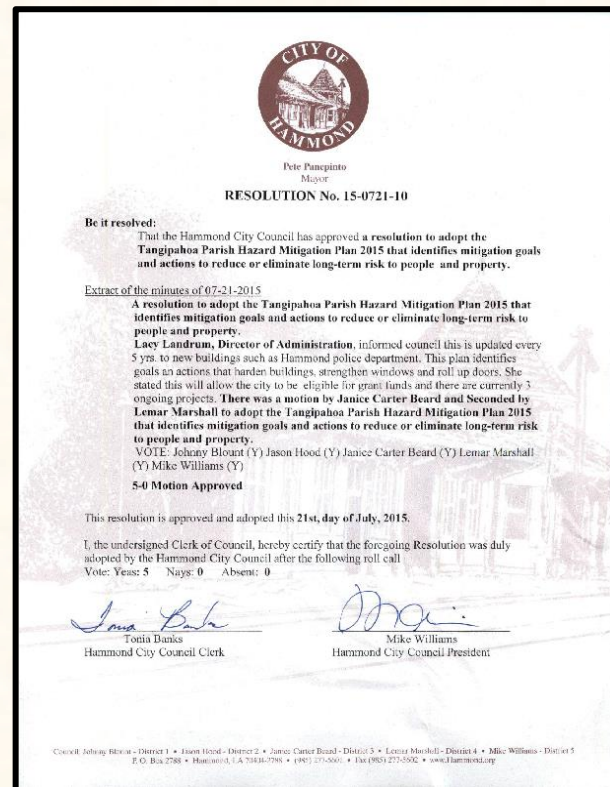
Appendix C: Critical Facilities

- Updated list of critical facilities
- Facilities must be parish or jurisdiction-owned
- Identifies which facilities are at risk to each profiled hazard



Appendix D: Plan Adoption

- Parish council resolution must be adopted, signed, and included in the final planning document
- The formal adoption must take place prior to FEMA submission **OR** after the plan is issued APA status



Appendix E: State Required Worksheets



Capability Assessment



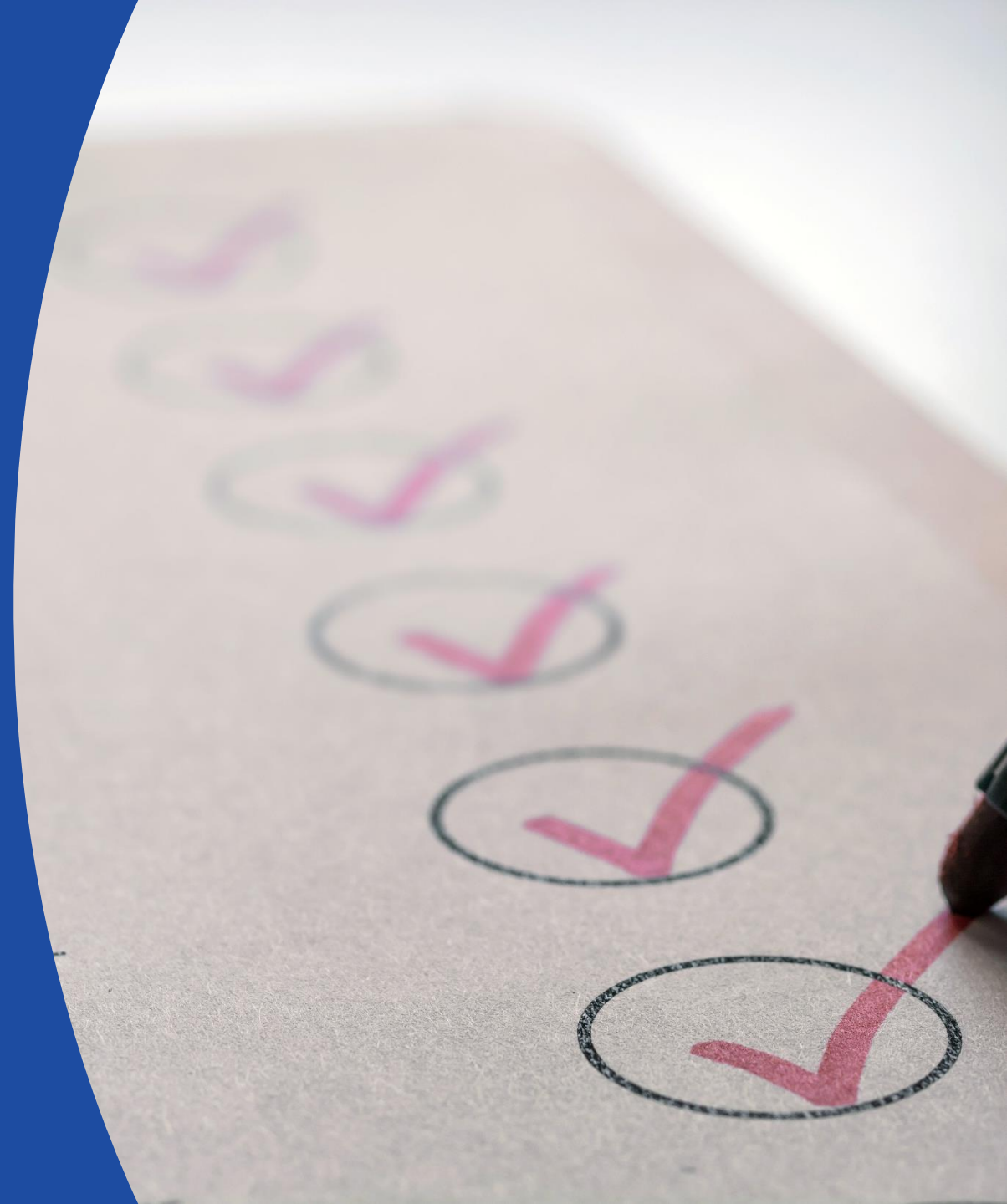
National Flood Insurance Program



Critical Facilities/Building Inventory



Vulnerable Populations



Capability Assessment

Capability Assessment Worksheet - Tangipahoa Parish		
Local mitigation capabilities are existing authorities, polices and resources that reduce hazard impacts or that could be used to implement hazard mitigation activities. Please complete the tables and questions in the worksheet as completely as possible.		
Planning and Regulatory		
Please indicate which of the following plans and regulatory capabilities your jurisdiction has in place.		
Plans	Yes / No	Comments
Comprehensive / Master Plan	Yes	
Capital Improvements Plan	Yes	
Economic Development Plan	Yes	
Local Emergency Operations Plan	Yes	
Continuity of Operations Plan	Yes	
Transportation Plan	Yes	
Stormwater Management Plan	Yes	
Community Wildfire Protection Plan	No	
Other plans (redevelopment, recovery, coastal zone management)	Yes	
Building Code, Permitting and Inspections	Yes / No	Comments
Building Code	Yes	
Building Code Effectiveness Grading Schedule (BCEGS) Score	No	
Fire Department ISO/PIAL rating	Yes	
Site plan review requirements	Yes	
Land Use Planning and Ordinances	Yes / No	Comments
Zoning Ordinance	Yes	
Subdivision Ordinance	Yes	
Floodplain Ordinance	Yes	
Natural Hazard Specific Ordinance (stormwater, steep slope, wildfire)	Yes	
Flood Insurance Rate Maps	Yes	
Acquisition of land for open space and public recreation uses	Yes	
Other	No	

Place answers in Yes/No column, add comments if necessary (i.e. what year the plan was updated last)

National Flood Insurance Program

National Flood Insurance Program (NFIP) - Tangipahoa Parish		
Insurance Summary		
How many NFIP policies are in the community? What is the total premium and coverage?		Comments
How many claims have been paid in the community? What is the total amount of paid claims? How many of the claims were for substantial damage?		
How many structures are exposed to flood risk with in the community?		
Describe any areas of flood risk with limited NFIP policy coverage.		
Staff Resources		
Is the Community FPA or NFIP Coordinator certified?		Comments
Is flood plain management an auxiliary function?		
Provide an explanation of NFIP administration services (e.g., permit review, GIS, education or outreach, inspections, engineering capability)		
What are the barriers to running an effective NFIP program in the community, if any?		
Compliance History		
Is the community in good standing with the NFIP?		Comments
Are there any outstanding compliance issues(i.e., current violations)?		
When was the most recent Community Assistance Visit (CAV) or Community Assistance Contact(CAC)?		
Is a CAV or CAC scheduled or needed? If so when?		
Regulation		
When did the community enter the NFIP?		Comments
Are the FIRMs digital or paper?		
When did the community adopt the FIRM?		
Do floodplain development regulations meet or exceed FEMA or State minimum requirements? If so, in what ways?		
Community Rating System (CRS)		
Does the community participate in CRS?		Comments
What is the community's CRS Class Ranking?		
Does the plan include CRS planning requirements?		

- Involve local/parish floodplain managers for this information



Building Inventory

Tangipahoa Parish Owned Building Inventory						Assessed Value	Date Built	Construction Type
Name of Building	Purpose of Building	Address	City	Latitude	Longitude			
Amite Elementary Magnet School	Public Education	301 Vernon Ave	Amite	30.72334096	-90.50034891			
Amite High Magnet School	Public Education	403 South Laurel St	Amite	30.72198996	-90.50615587			
Amite Westside Middle Magnet School	Public Education	401 West Oak St	Amite	30.72574649	-90.5147772			
Champ Cooper Elementary School	Public Education	42530 Hwy-445	Ponchatoula	30.47204397	-90.32514315			
Chesbrough Elementary School	Public Education	68495 Hwy-1054	Kentwood	30.84756963	-90.45559341			
D.C. Reeves Elementary School	Public Education	18026 Sisters Rd	Ponchatoula	30.446877	-90.43149688			
Greenville Park Leadership Academy	Public Education	111 J.W. Davis Dr	Hammond	30.49801452	-90.46901397			
Hammond Eastside Magnet School	Public Education	45050 River Rd	Hammond	30.51371291	-90.38008422			
Hammond Eastside Magnet Lower	Public Education	43052 Yokum Rd	Hammond	30.48050438	-90.43904832			
Hammond High Magnet School	Public Education	45168 River Rd	Hammond	30.51731676	-90.37981603			
Hammond Westside Montessori School	Public Education	2600 PFC Matthew E. Wildes St	Hammond	30.48454497	-90.48944957			
Independence High Magnet School	Public Education	270 Tiger Ave	Independence	30.63462367	-90.49393728			
Independence Leadership Academy	Public Education	221 Tiger Ave	Independence	30.63501892	-90.49656065			
Jewel M. Summer High School	Public Education	15841 Hwy-440	Kentwood	30.87221767	-90.46590845			
Jewel M. Summer Middle School	Public Education	15649 Hwy-440	Kentwood	30.87243867	-90.4694597			
Kentwood High Magnet School	Public Education	603 9th St	Kentwood	30.93746866	-90.51504592			
Loranger Elementary School	Public Education	54101 Martin St	Loranger	30.63897395	-90.39886868			
Loranger High School	Public Education	19404 Hiatt St	Loranger	30.64049099	-90.39993595			
Loranger Middle School	Public Education	54123 Allman St	Loranger	30.63909415	-90.40103219			
Lucille Nesom Memorial School	Public Education	14417 Hwy-442	Tickfaw	30.57761097	-90.48673406			
Martha Vineyard Elementary School	Public Education	40105 Dunson Rd	Ponchatoula	30.44387017	-90.39814914			
Midway Elementary School	Public Education	48405 Hwy-51	Tickfaw	30.55695008	-90.48345684			
Natalbany Middle School	Public Education	47370 N. Morrison Blvd	Natalbany	30.54402606	-90.48176686			
O.W. Dillon Leadership Academy	Public Education	1459 I-55 Service Rd	Kentwood	30.92853489	-90.52619152			
Perrin Early Learning Center	Public Education	350 West Ash St	Ponchatoula	30.43301495	-90.4435167			

Vulnerable Populations

Vulnerable Populations Worksheet - Tangipahoa Parish				
All Hospitals (Private or Public)				
Name	Street	City	Latitude	Longitude
PAM Health Specialty Hospital	42074 Veterans Ave	Hammond	30.46789214	-90.45537061
Amite Health Unit	330 W Oak St	Amite City	30.72736013	-90.51379599
Hood Memorial Hospital	301 Walnut St	Amite City	30.73252997	-90.51305774
Amite Rural Health Clinic	409 NW Central Ave	Amite City	30.73192944	-90.50995346
Community Care Hospice	1007 W Thomas St	Hammond	30.50137851	-90.4720736
Medicaid Office	45615 University Park Dr	Hammond	30.51752172	-90.48670784
North Oaks Medical Center	15790 Paul Vega MD Dr	Hammond	30.46625498	-90.46144376
Ochsner Health Center	41676 Veterans Ave	Hammond	30.46526796	-90.45631545
Cypress Pointe Surgical Hospital	42570 S Airport Rd	Hammond	30.47699971	-90.41296531
LSU Lallie Kemp Medical Center	52579 US-51	Independence	30.62242318	-90.49801609
Southeast Community Health Systems	721 Ave G	Kentwood	30.93761195	-90.51909731
North Oaks Urgent Care	530 W Pine St	Ponchatoula	30.43773664	-90.44906918
Nursing Homes (Private or Public)				
Name	Street	City	Latitude	Longitude
Belle Maison Nursing Home	15704 Medical Arts Dr	Hammond	30.46420346	-90.46040631
Hammond Nursing Home	501 Old Covington Hwy	Hammond	30.49429222	-90.45391741
Heritage Healthcare	1300 Derek Dr	Hammond	30.48710687	-90.48562333
Landmark Nursing Center	42250 N Oaks Dr	Hammond	30.47277051	-90.46394094
Summerfield Senior Living	16170 E Minnesota Park Rd	Hammond	30.48371215	-90.45147964
Oak Park Village	17010 Old Covington Hwy	Hammond	30.49330138	-90.44767961
Mobile Home Parks				
Name	Street	City	Latitude	Longitude

Appendix F – Element 512.a

Floodplain Management Plan (FMP)

- Focuses specifically on information required for CRS credit
- Some of the steps outlined in Element 512.a will be accomplished the hazard mitigation planning process.
 - Risk Assessment Meeting (Steps 4-6)
 - Mitigation Action Workshop (Steps 7-8)
- Other steps will need to be addressed by Tangipahoa Parish

Credit Points	Class	Flood Insurance Premium Reduction
4,500+	1	45%
4,000 – 4,499	2	40%
3,500 – 3,999	3	35%
3,000 – 3,499	4	30%
2,500 – 2,999	5	25%
2,000 – 2,499	6	20%
1,500 – 1,999	7	15%
1,000 – 1,499	8	10%
500 – 999	9	5%
0 – 499	10	0%

Questions?



Parish Mitigation Survey

- Collects information regarding perceptions of local hazards and mitigation efforts
- Results will be included in the plan if there are enough responses

https://lsu.qualtrics.com/jfe/form/SV_9M0IPLM7nkr2xzo



Survey Trends So Far...

- As of October 10, 2025:
 - **76** responses collected
 - **Hurricanes, Flooding, and Tornadoes** are the hazards of greatest concern to respondents.
 - **54%** of respondents place trust in their local government and for hazard information than in ten other external sources.
 - **63%** say social media is most effective way to get information on making their home safer from disasters
 - **20%** of respondents are unaware if their home is in a flood zone

SDMI Hazard Mitigation Website

- Repository for materials used during the plan update process
- <https://hmplans.sdmi.lsu.edu/>

The screenshot shows the main navigation and introductory content of the website. At the top, it features the LSU Stephenson Disaster Management Institute logo and a 'SDMI HOME' button. The main heading is 'HAZARD MITIGATION' with sub-links for 'Intro', 'Events', 'FEMA Resources', and 'Parish Plans'. A 'Sponsored by' section displays the Louisiana State Seal. The central text explains the purpose of Hazard Mitigation Plans: 'Parishes maintain Hazard Mitigation Plans to meet federal requirements of Title 44 Code of Regulations (CFR) §201.6 for approval and eligibility to apply for FEMA Hazard Mitigation Assistance grant programs. Approved Parish Hazard Mitigation Plans will allow for distribution of Hazard Mitigation funding following future disasters.' Below this, there are three buttons: 'CHOOSE A VIEW', 'MAP OF PARISHES', and 'LIST OF PARISHES'. A map of Louisiana is shown with a legend for the 'Development Process' stages: Plan Development (light blue), Plan Review (medium blue), Plan Adopted (dark blue), Completed (darkest blue), and Not Participating (white). A summary table at the bottom shows the number of parishes in each stage.

Step 1: Plan Development	Step 2: Plan Review	Step 3: Plan Adoption	Step 4: Completed
4 Parishes currently in this stage	10 Parishes currently in this stage	1 Parishes currently in this stage	45 Parishes currently in this stage

This screenshot displays the specific page for the Tangipahoa Parish Hazard Mitigation Plan. It includes a 'PLAN DUE DATE: JUNE 15 2025' badge. A 'DEVELOPMENT STATUS' progress bar shows the stages: PLAN DEVELOPMENT, PLAN REVIEW, PLAN ADOPTION, and COMPLETED. Below this, a list of 'PARTICIPATING JURISDICTIONS' includes the City of Amite, City of Hammond, Town of Independence, Town of Rosebud, Village of Tangipahoa, and Village of Tickaw. A 'MEETINGS' section lists four events with dates and times, each with a download icon. A 'PREVIOUS PLANS' section shows download links for the 2020 and 2015 plans, including the 2015 Kickoff Meeting, Risk Assessment & Public Meeting, and the full Hazard Mitigation Plan. At the bottom, there is a 'Survey' section with an 'Access Survey' button.

Next Steps

- Worksheet Due Dates
- Provide Mitigation Action Workbooks
- Dates for Next Meetings
 - Risk Assessment Meeting (CRS Steps 4-6)
 - Mitigation Action Workshop (CRS Steps 7-8)
 - Public Plan Review Meeting
- Current plan expires June 15, 2026



Contact Us

Chris Rippetoe, CFM

HM Program Manager

crippe2@lsu.edu

(225) 578-6667

Jason Martin

Emergency Management Analyst

jmar293@lsu.edu

(225) 578-6264

